

MAY  
2021

**Preschool**  
WEEKLY CUES

YOU GOT  
THIS!

Theme

# Jump, Jump

Week Two

**Jonah 1:1-3:10**

Jonah learns the hard way that he should go God's way when he is swallowed by a huge fish.

## Say This

Whose way is perfect?  
*God's way is perfect.*

## Do This

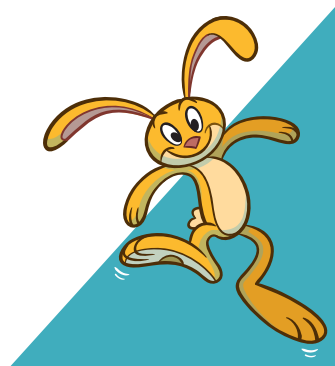


### Drive Time

As you drive or take a walk, tell your child which way you need to go in order to get where you're going. Ask your child what would happen if you went the wrong way. (You would not get where you need to go.) Talk about how God's way is perfect. That means God's way is never ever wrong. God's way will always be the best way and will get us where God wants us to go.

**REMEMBER THIS**

"God's way is perfect."  
2 Samuel 22:31, NlrV



MAY  
2021

**Preschool**  
WEEKLY CUES

YOU GOT  
THIS!

Theme

# Jump, Jump

Week Two

**Jonah 1:1-3:10**

Jonah learns the hard way that he should go God's way when he is swallowed by a huge fish.

## Say This

Whose way is perfect?  
*God's way is perfect.*

## Do This

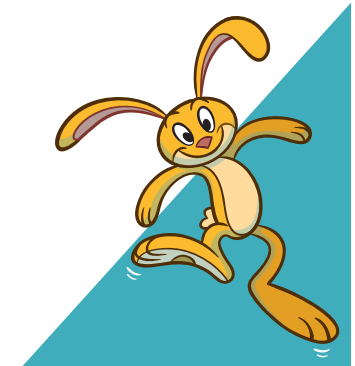


### Drive Time

As you drive or take a walk, tell your child which way you need to go in order to get where you're going. Ask your child what would happen if you went the wrong way. (You would not get where you need to go.) Talk about how God's way is perfect. That means God's way is never ever wrong. God's way will always be the best way and will get us where God wants us to go.

**REMEMBER THIS**

"God's way is perfect."  
2 Samuel 22:31, NlrV



**Whenever you  
make a mistake  
as a parent  
(and you will)  
just admit it and  
start over.**

---

For blog posts and parenting resources, visit [TheParentCue.org](https://TheParentCue.org)



**Download the free Parent Cue App**  
AVAILABLE FOR IOS AND ANDROID DEVICES

**Whenever you  
make a mistake  
as a parent  
(and you will)  
just admit it and  
start over.**

---

For blog posts and parenting resources, visit [TheParentCue.org](https://TheParentCue.org)



**Download the free Parent Cue App**  
AVAILABLE FOR IOS AND ANDROID DEVICES